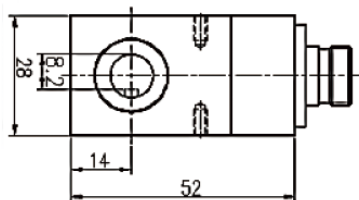
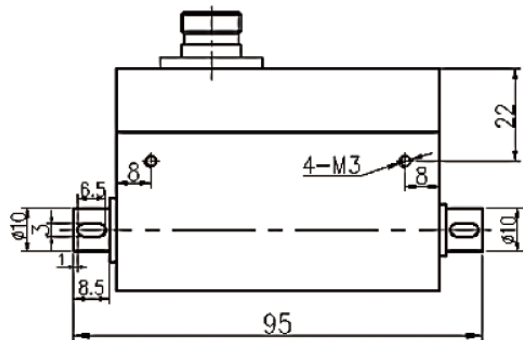


安装尺寸 MOUNTING DIMENSION

扭矩传感器 Torque Sensor

MS4009



特点和用途 FEATURES & APPLICATIONS

- ◆ 电阻应变为敏感元件和集成电路构成的一体产品
- ◆ 精度高、性能稳定可靠
- ◆ 电刷供电, 可测量正反两方向扭矩值
- ◆ 两端均为键连接, 安装使用方便
- ◆ 最高测量转速1800 转/分钟

- ◆ Resistance strain is an integrated product composed of
- ◆ sensitive components and integrated circuits with high precision, stable and reliable performance
- ◆ Brush power supply, can measure the positive and negative torque value
- ◆ Both ends are connected by keys, easy to install and use
- ◆ Maximum measured speed 1800 RPM

技术参数 TECHNICAL PARAMETERS

参数	Specifications	技术指标/Technique
额定容量	Capacity	0.1,0.2,0.3,0.5,1~5Nm
输出灵敏度	Rated output	1.0~1.5mV/V
零点输出	Zero balance	±2% F.S.
非线性	Non-linearity	±0.1,0.3%F.S.
滞后	Hysteresis	≤±0.05%F.S.
重复性	Repeatability	≤±0.05%F.S.
温度灵敏度漂移	Temp.effect on output	0.3%F.S./10℃
零点温度漂移	Temp.effect on zero	0.3%F.S./10℃
输入电阻	Input impedance	700±10Ω
输出电阻	Output impedance	350±10Ω
绝缘电阻	Insulation Recommended	≥5000MΩ/100VDC
激励电压	Recommended excitation	10-15VDC
最大激励电压	Maximum excitation	20V
温度补偿范围	Compensated temp range	-10~60℃
工作温度范围	Operation temp range	-30~65℃
安全超载	Safe overload	150%F.S.
极限超载	Ultimate overload	150%F.S.
电缆线尺寸	Cable size	Φ5.2x3m
防护等级	IP Class	IP66

受力方式 Load Direction

